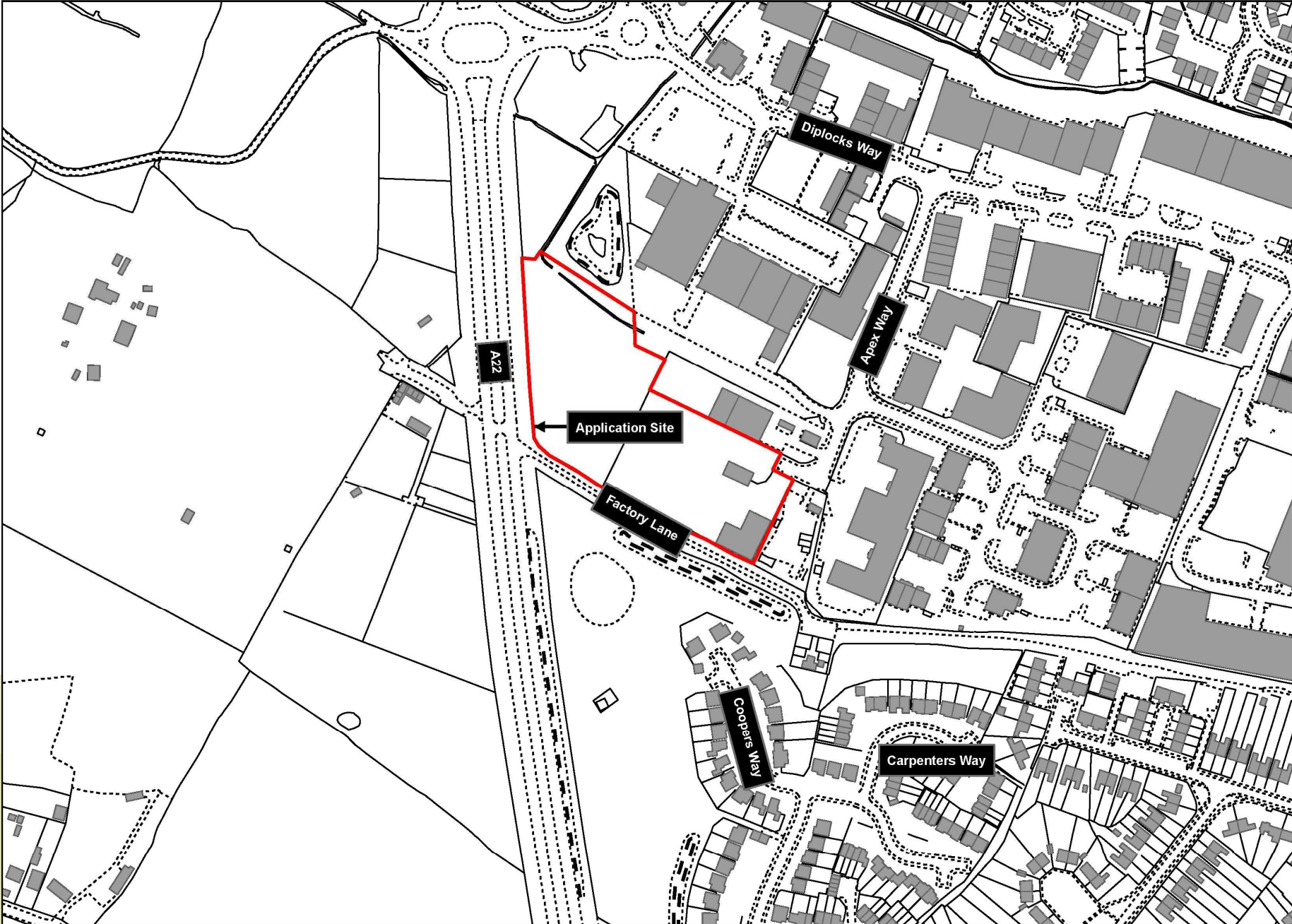


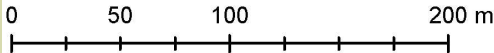
WD/781/CM

H Ripley & Co, Apex Way, Diplocks Industrial Estate, Hailsham

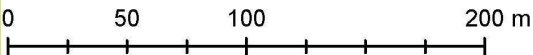
New building to accommodate scrap metal shredding and processing machinery.



Page 2

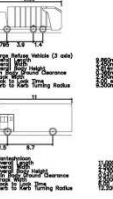
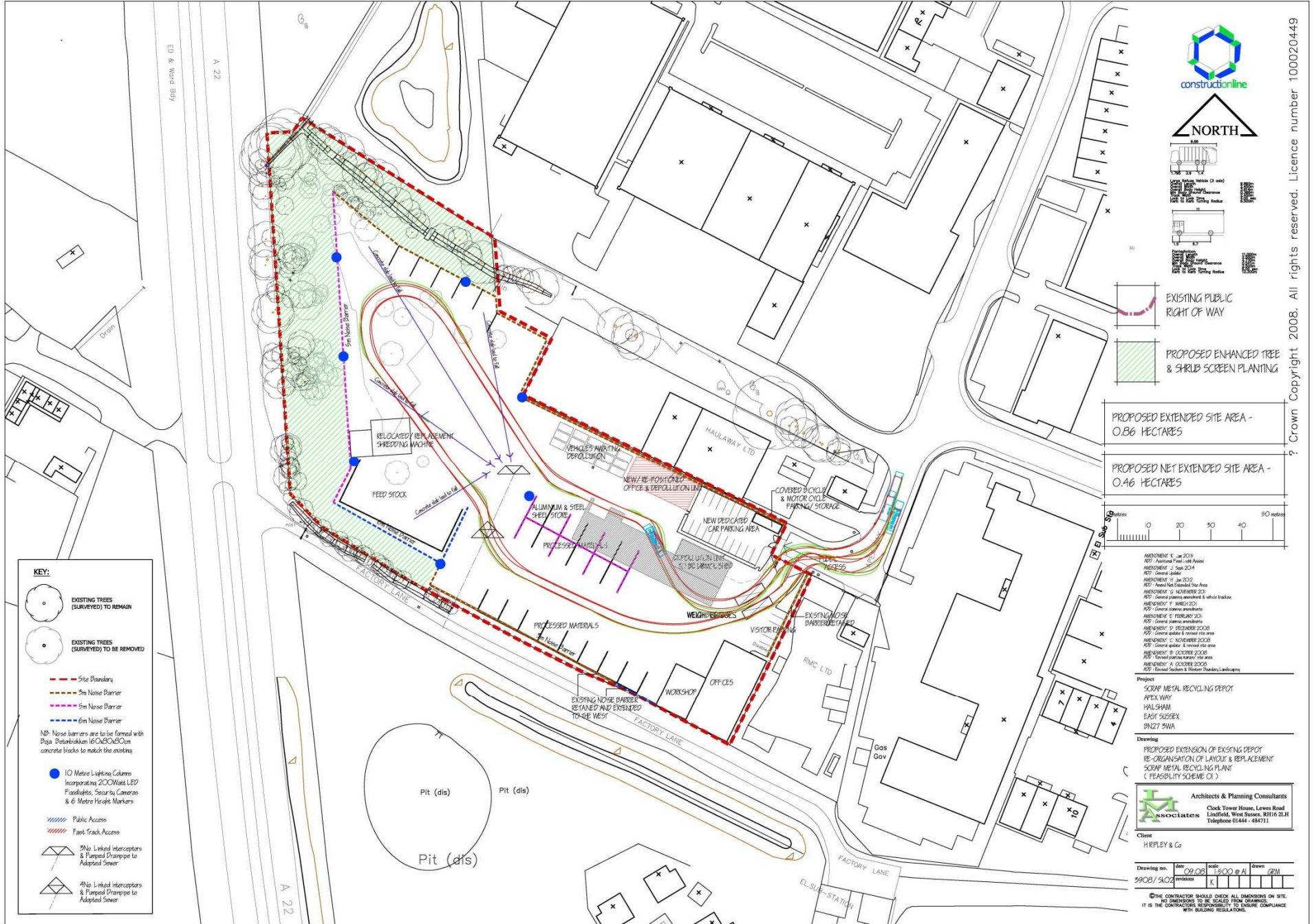


Reproduced from the Ordnance Survey mapping with the permission of the Controller of Her Majesty's Stationery Office © Crown Copyright. Unauthorised reproduction infringes Crown copyright and may lead to prosecution or civil proceedings. East Sussex County Council, 100019601, 2016



Reproduced from the Ordnance Survey mapping with the permission of the Controller of Her Majesty's Stationery Office © Crown Copyright. Unauthorised reproduction infringes Crown copyright and may lead to prosecution or civil proceedings. East Sussex County Council, 100019601, 2016

Proposed Extension



EXISTING PUBLIC RIGHT OF WAY

PROPOSED ENHANCED TREE & SHRUB SCREEN PLANTING

PROPOSED EXTENDED SITE AREA - 0.86 HECTARES

PROPOSED NET EXTENDED SITE AREA - 0.46 HECTARES



- REVISION 1: 14 JAN 2014
- REVISION 2: 17 SEP 2014
- REVISION 3: 17 SEP 2014
- REVISION 4: 17 SEP 2014
- REVISION 5: 17 SEP 2014
- REVISION 6: 17 SEP 2014
- REVISION 7: 17 SEP 2014
- REVISION 8: 17 SEP 2014
- REVISION 9: 17 SEP 2014
- REVISION 10: 17 SEP 2014
- REVISION 11: 17 SEP 2014
- REVISION 12: 17 SEP 2014
- REVISION 13: 17 SEP 2014
- REVISION 14: 17 SEP 2014
- REVISION 15: 17 SEP 2014
- REVISION 16: 17 SEP 2014
- REVISION 17: 17 SEP 2014
- REVISION 18: 17 SEP 2014
- REVISION 19: 17 SEP 2014
- REVISION 20: 17 SEP 2014
- REVISION 21: 17 SEP 2014
- REVISION 22: 17 SEP 2014
- REVISION 23: 17 SEP 2014
- REVISION 24: 17 SEP 2014
- REVISION 25: 17 SEP 2014
- REVISION 26: 17 SEP 2014
- REVISION 27: 17 SEP 2014
- REVISION 28: 17 SEP 2014
- REVISION 29: 17 SEP 2014
- REVISION 30: 17 SEP 2014
- REVISION 31: 17 SEP 2014
- REVISION 32: 17 SEP 2014
- REVISION 33: 17 SEP 2014
- REVISION 34: 17 SEP 2014
- REVISION 35: 17 SEP 2014
- REVISION 36: 17 SEP 2014
- REVISION 37: 17 SEP 2014
- REVISION 38: 17 SEP 2014
- REVISION 39: 17 SEP 2014
- REVISION 40: 17 SEP 2014
- REVISION 41: 17 SEP 2014
- REVISION 42: 17 SEP 2014
- REVISION 43: 17 SEP 2014
- REVISION 44: 17 SEP 2014
- REVISION 45: 17 SEP 2014
- REVISION 46: 17 SEP 2014
- REVISION 47: 17 SEP 2014
- REVISION 48: 17 SEP 2014
- REVISION 49: 17 SEP 2014
- REVISION 50: 17 SEP 2014

Project: SCRAP METAL RECYCLING DEPOT, APEX WAY, HULLSWAIN, EAST SUSSEX, BN27 5WA

Drawings: PROPOSED EXTENSION OF EXISTING DEPOT, RE-ORGANISATION OF LAYOUT & REPLACEMENT SCRAP METAL RECYCLING PLANT (FEASIBILITY SCHEME 01)



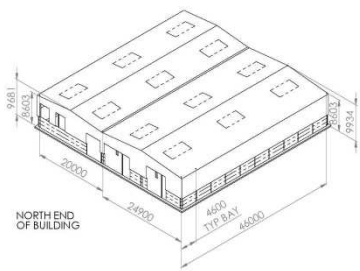
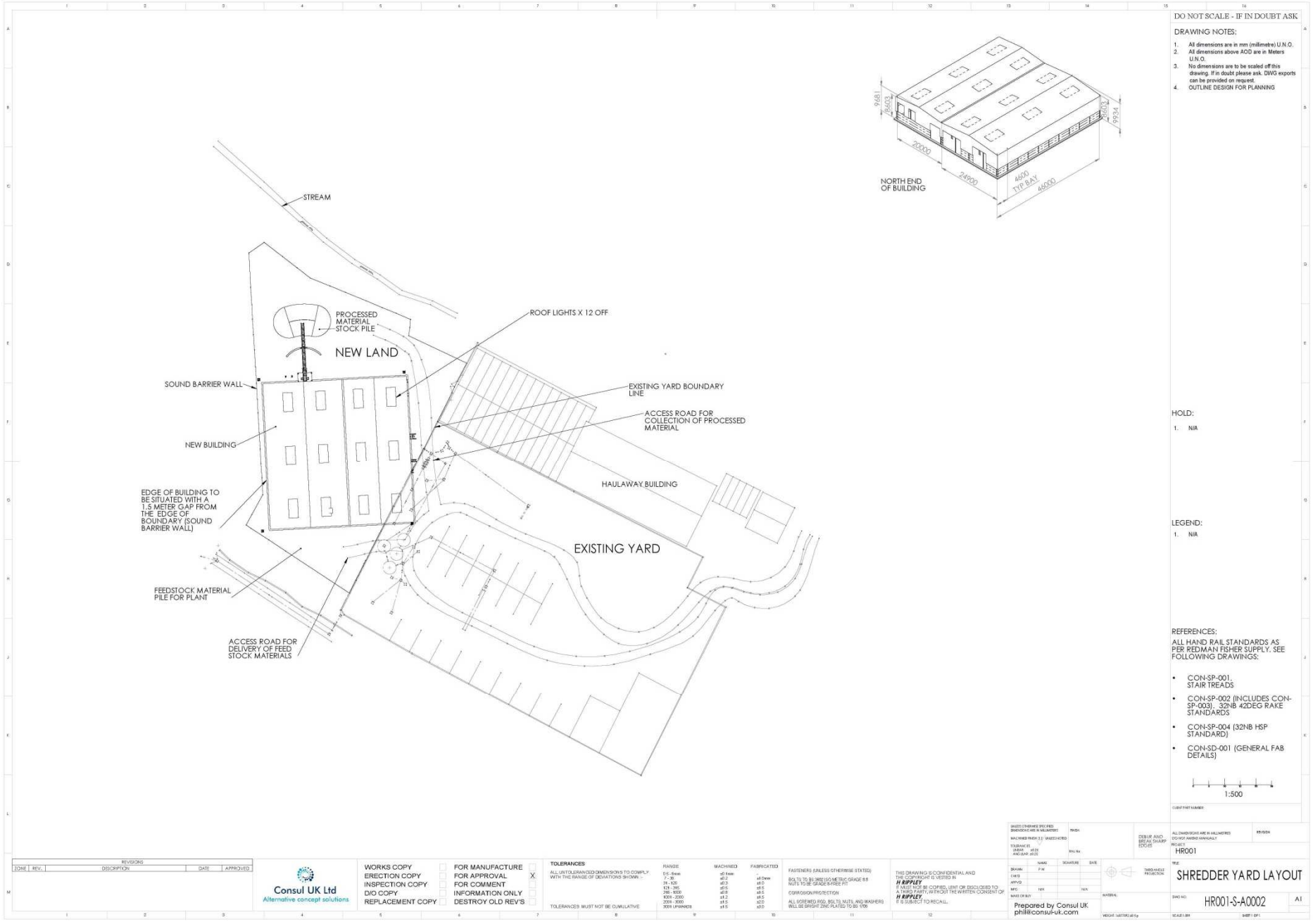
Client: HIRPLEY & Co

Drawing no.	Rev	Date	Scale	Drawn	Check
5908/ SK02	001	17 SEP 2014	1:500 @ A1	RFJ	RFJ

THE CONTRACTOR SHOULD CHECK ALL DIMENSIONS ON SITE. NO DIMENSIONS TO BE SCALED FROM DRAWINGS. IT IS THE CONTRACTOR'S RESPONSIBILITY TO ENSURE COMPLIANCE WITH RELEVANT REGULATIONS.

Shredder Yard Layout

Page 5



DO NOT SCALE - IF IN DOUBT ASK

DRAWING NOTES:

- All dimensions are in mm (millimetre) U.N.O.
- All dimensions above A0D are in Meters U.N.O.
- No dimensions are to be scaled off this drawing. If in doubt please ask. DWG exports can be provided on request.
- OUTLINE DESIGN FOR PLANNING

HOLD:

- 1. N/A

LEGEND:

- 1. N/A

REFERENCES:

- ALL HAND RAIL STANDARDS AS PER REDMAN FISHER SUPPLY. SEE FOLLOWING DRAWINGS:
- CON-SP-001 (STAIR TREADS)
 - CON-SP-002 (INCLUDES CON-SP-003) 32NB 42DEG RAKE STANDARDS
 - CON-SP-004 (32NB HSP STANDARD)
 - CON-SD-001 (GENERAL FAB DETAILS)



TABLET NUMBER:

ZONE	REV.	DESCRIPTION	DATE	APPROVED



WORKS COPY
ERECTION COPY
INSPECTION COPY
D/D COPY
REPLACEMENT COPY

FOR MANUFACTURE
FOR APPROVAL
FOR COMMENT
INFORMATION ONLY
DESTROY OLD REV'S

TOLERANCES
ALL UNLESS OTHERWISE SPECIFIED TO COMPLY WITH THE RANGE OF DEVIATIONS SHOWN:

RANGE	MACHINED	FABRICATED
0-5 mm	±0.10	±0.20
5-30	±0.15	±0.30
30-100	±0.20	±0.40
100-300	±0.30	±0.50
300-1000	±0.40	±0.60
1000+ mm	±0.50	±0.80

TOLERANCES MUST NOT BE CUMULATIVE

FASTENERS (UNLESS OTHERWISE STATED):
BOLTS TO BE GR50 AND TO BE TO THE GRADE AS NOTED TO BE GRADE 8.8 (IF NOT SPECIFIED)
CORROSION PROTECTION
ALL SPHERICAL BUSHES, NUTS AND WASHERS WILL BE DRINK SPECIFIED TO BS 1978

THIS DRAWING IS CONFIDENTIAL AND THE COPYRIGHT IS RESERVED BY **HR001**
IT IS NOT TO BE COPIED, REPRODUCED OR DISCLOSED TO ANY OTHER PARTY WITHOUT THE WRITTEN CONSENT OF **HR001**
IT IS SUBJECT TO RECALL.

NO.	NAME	SCALE	DATE

ALL DIMENSIONS ARE IN MILLIMETERS UNLESS OTHERWISE SPECIFIED

PROJECT: **SHREDDER YARD LAYOUT**

NO: **HR001-S-A0002**

SCALE: 1:500

DATE: 01/11/2024

PREPARED BY: **phil@consul-uk.com**

Entrance to site with adjacent concrete batching plant on left



View to the south west along southern boundary of the eastern part of the site



South west corner of eastern part of the site



Plant within central part of the eastern yard looking north



Metal processing plant in eastern part of the site to be moved to proposed building in the western part of the site



Northern part of eastern yard with adjacent waste transfer building beyond



Boundary of western extension with eastern part of site



North eastern part of western extension adjoining waste transfer building



Looking south west across western extension area



Looking west across western extension area



View north west across western extension area



Looking east along Factory Lane with southern boundary to application site on left



Looking north at end of Coopers Way cul-de-sac



WD/781/CM

H Ripley & Co, Apex Way, Diplocks Industrial Estate, Hailsham

New building to accommodate scrap metal shredding and processing machinery.